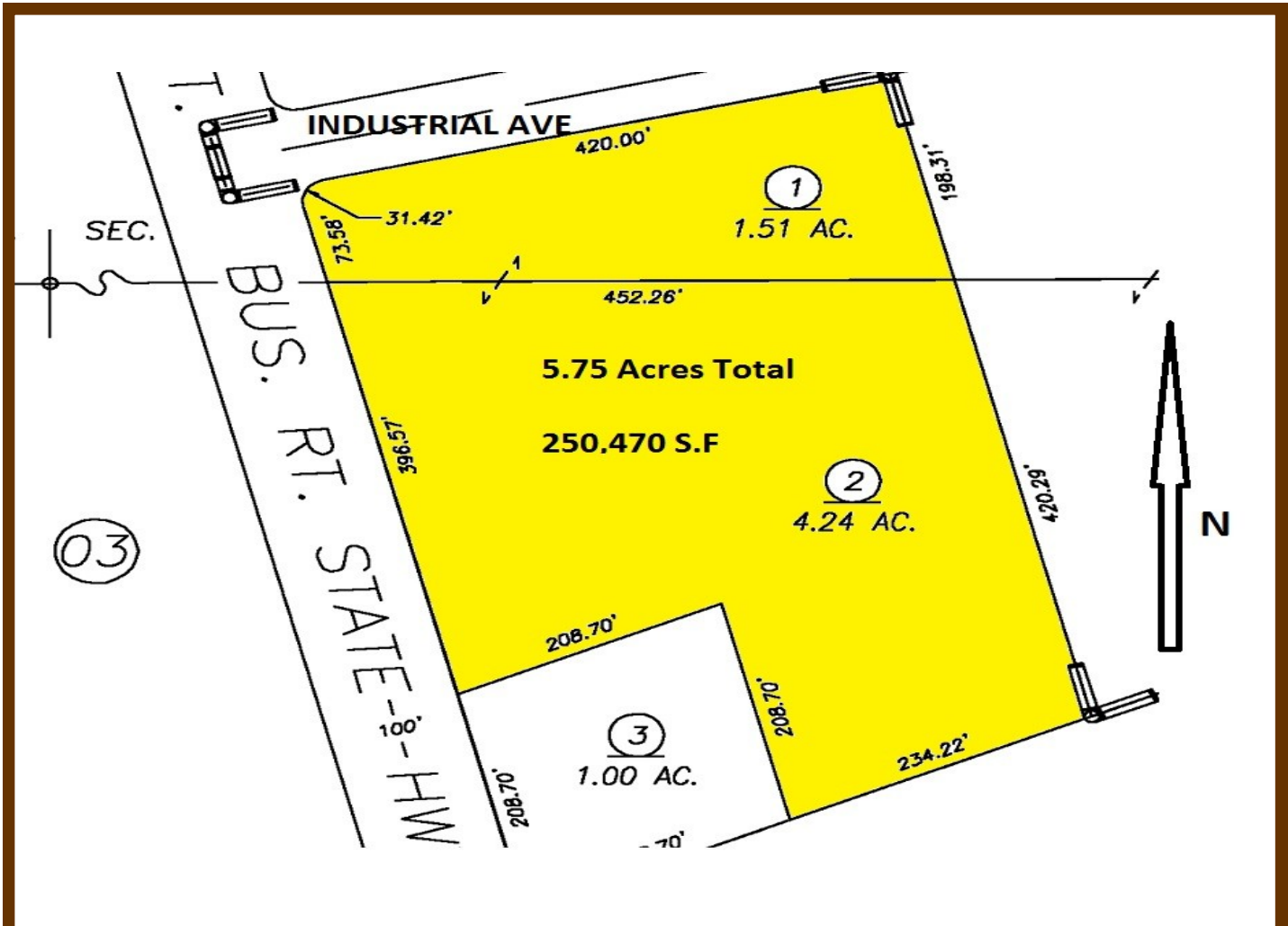


Manuel Ortiz Real Estate

5.75 Acres Industrial Lots

K Street & Industrial Ave.

Tulare, CA



Great corner location, heavy traffic with a total of 250,470 square feet. Property is Zoned M-2 Heavy Industrial but also can be used for Gas Station/Convenience Store with approval. Located just on the south end of Tulare. Directions: From Paige Ave & K Street go south to Industrial Ave. Property is located on the S/E corner.

Summary Report

Total Acres: 5.75 Acres

Acreage For Sale: APN 191-330-002(4.24 Ac), 191-330-001 (1.51 Ac)

Price: \$700,000

Nearest City: Tulare

Property Type: Zoned M-2

Location: K Street & Industrial Ave, S/E Corner

Selling Acreage: 5.75 Ac

Financing: Cash

Water Information: City of Tulare

Comments: Property is located on the South end of the City of Tulare. K street is a heavy traffic road running from the South end of Tulare to the North end of the city. Across the street is Enterprise Car Rental, Golden State Paint & Body, the newly built Cal State Distributing, Tulare Firestone Warehouse, and Love's Truck Stop. Also across the freeway from the Tulare World Ag Expo.

Directions: Freeway 99, Take Paige off-ramp, turn West on Paige. Stay West on Paige to K Street, turn South on K to Industrial.

Disclaimer: The Information being provided was obtained from sources deemed to be reliable. The brokers, their agents or the sellers do not guarantee that the information is accurate. Any interested party is advised to do their own due diligence regarding these properties and should not rely on the information provided.

Photos



Photos



Aerial View



Location Map

